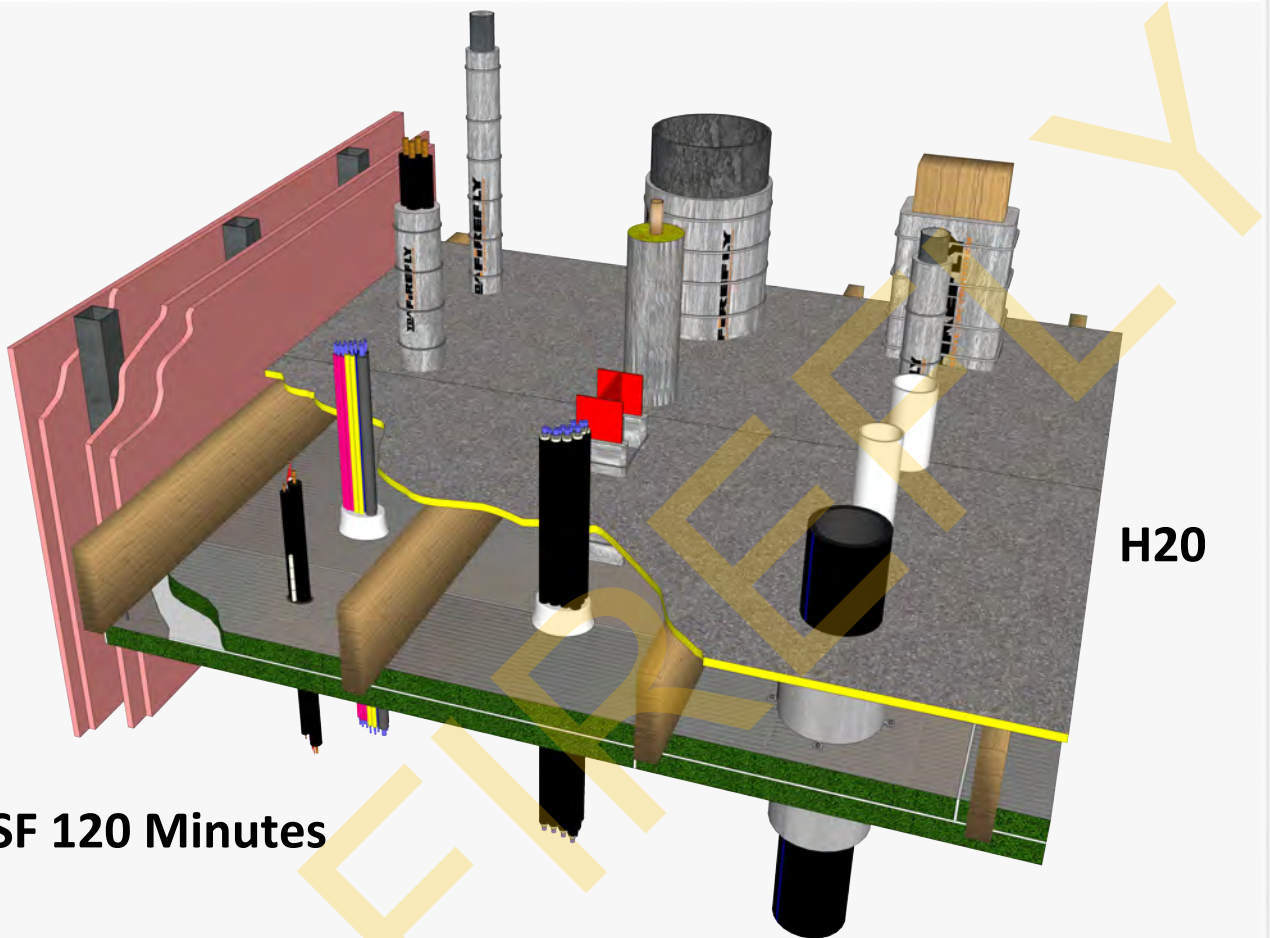


FIRE STOPPING 2HR TBA FIREFLY INTUBATT PLANT ROOM CEILINGS



The 2 referenced Reports below are from a Registered Testing Authority which meet A2.2, A2.3 and Specification A2.3 of the BCA (NCC) - DTS Compliance for Tested Systems:

FRL 120/120/120

Exova Report RIR 27186 ID H20 2 Layers of TBA Firefly Intubatt fixed directly to the underside of timber floor joists. 1st Layer screwed into the floor joists with 75mm x 8g needle point screws and penny washers. Ensure that all joints and abutments are painted with Intumastic. 2nd Layer laminated to the 1st with Intumastic and 90mm Pigtails screws.

Exova Report RIR 34088500: All services contained within Table 6, Table 8, Table 8a and Table 8b may pass through Seal ID H20

Spacing between Multiple Service Penetrations: Minimum 40mm apart

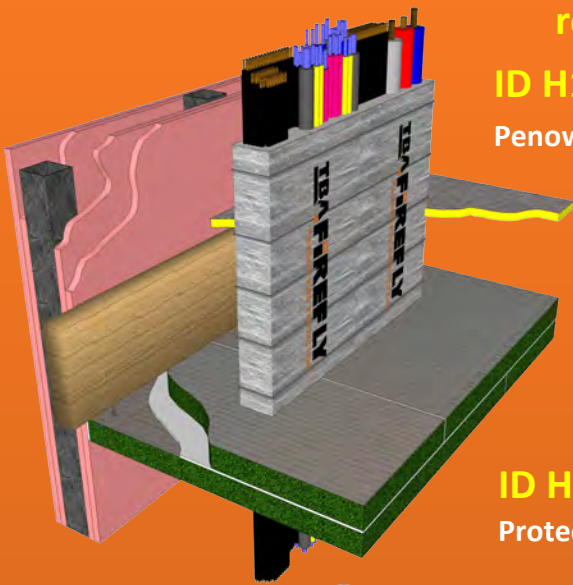
TBA Protective Technologies
Australia Head Office
Unit 12, 8 Leighton Place
Hornsby, NSW, 2077

TBA Firefly Head
Office
P.O. BOX 52
Laidley
QLD, 4341
Australia

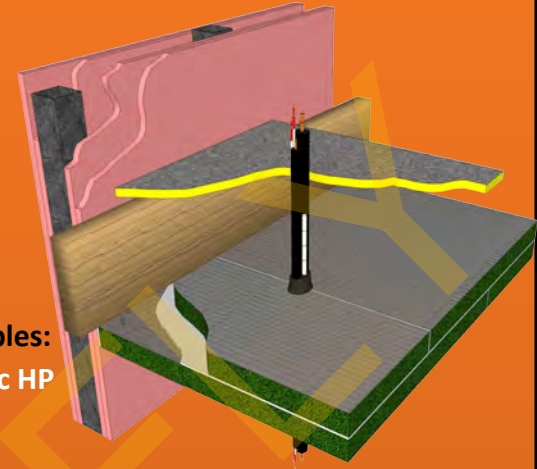
Contact Us
Phone: (07) 5411 4209
Mobile: 0400 966 899
Email: trevor@tbafirefly.com.au



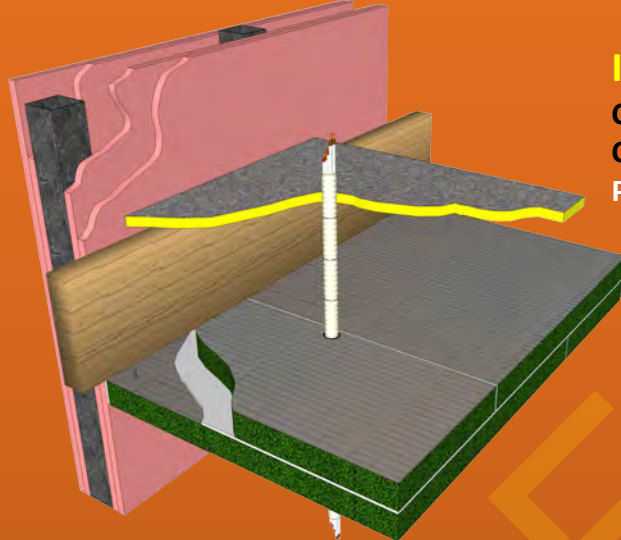
Overview of some of the Tested services which achieve an FRL-/120/120 through the TBA Firefly Intubatt Ceiling System: The Specific Service ID No's referenced below are from Exova RIR 34088500:



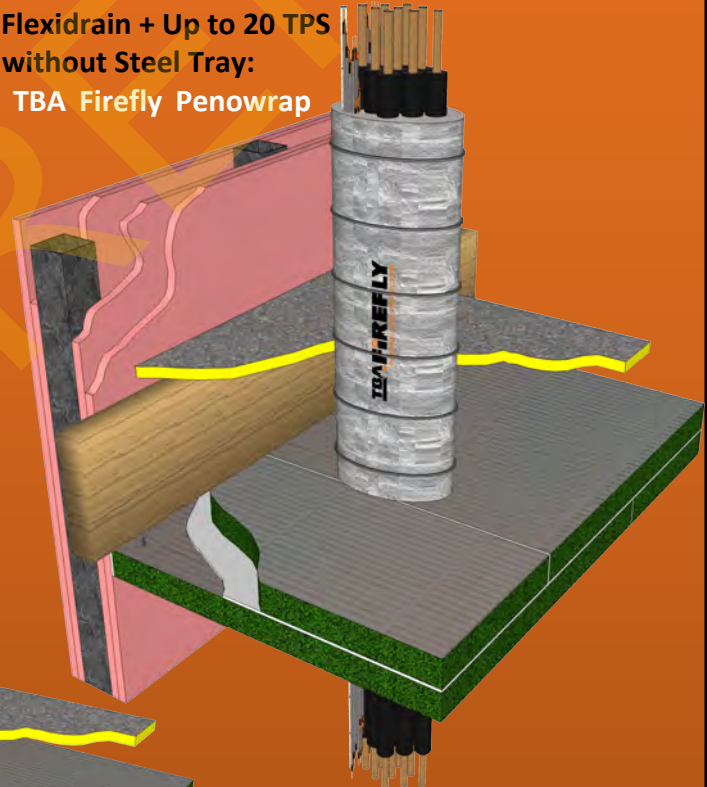
ID H1 - D1 Power Cables with Tray: Protected with TBA Firefly Penowrap 300mm Top & Bottom or 600mm Topside Only



ID H40 - Pair Coil, Flexidrain & Cables: Protected with TBA Firefly Intumastic HP



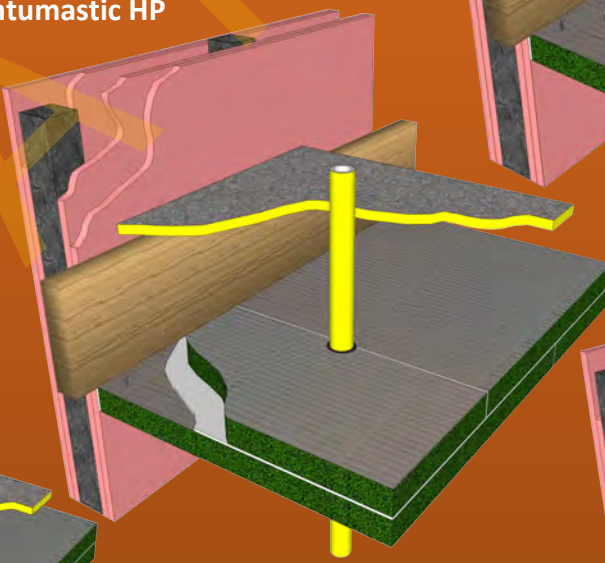
ID H42 - Up to 9 x 13mm Armaflex Lagged Copper Pipes + Flexidrain + Up to 20 TPS Cables, with or without Steel Tray: Protected with TBA Firefly Penowrap



ID H41 - 25mm PVC Conduit with up to 8 TPS Cables: Protected with TBA Firefly Intumastic HP



ID H49 - PEX-AL Gas Pipe: Protected with TBA Firefly Intumastic HP



ID H30 - Bundle of up to 12 Fire Alarm Cables: Protected with Intumastic HP

ID H48 - Up to 300mm OD Steel Sprinkler Pipe: Protected with TBA Firefly Penowrap 1m high Topside Only